

GEARBOXX™

The compact control system for breweries

The automation of small breweries, plant sections or units requires small control systems that have smaller quantity structures, but efficiently cover all important functionalities of a larger process control system. With the integration of the previous systems from Huppmann and Tuchenhausen Brewery Systems into GEARBOXX™, GEA Brewery Systems offers a product that meets exactly these requirements.

The cost structure of a PC-based process control system is considerably influenced by components that are not required for the actual function, but that are indispensable for safe operation of the entire plant.

For example:

- Creation of the environment required for the process control system, i.e. a control room with secondary rooms and an air-conditioning system will normally be required.
- Expensive and diversified licensings of different software products.
- The use of PCs involves the use of wear parts like hard disks and fans, which finally necessitate redundant equipment.

With the GEARBOXX™ concept, GEA Brewery Systems minimizes exactly these additional costs.

All GEARBOXX™ components are based on proven and constantly innovated compact control concepts.

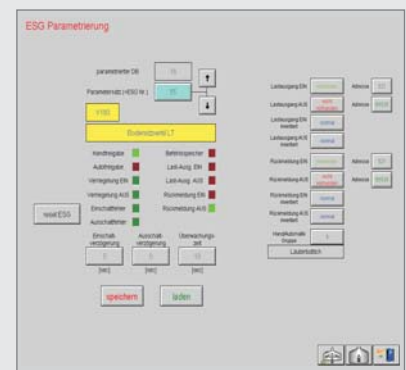
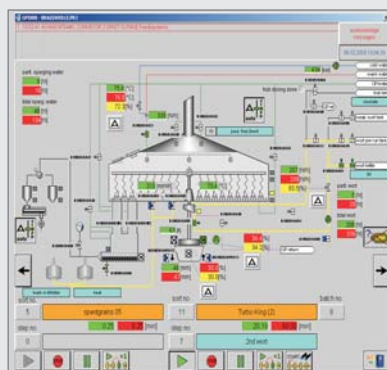
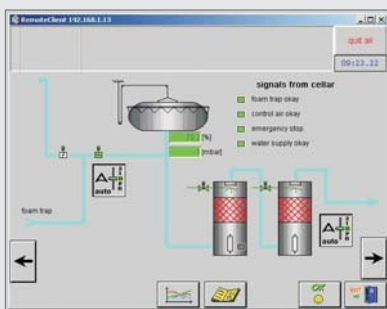
The IP65 HMI devices with stainless steel front can be installed directly in the field. Complete program storage is done on semiconductor memories without any movable parts in the PLC as well as in the HMI device.

With the components PLC and panel operator unit (HMI), GEARBOXX™ already offers a similar functionality as large process control systems.

- Operation and parameter correction of all I/O elements from the graphical user interface
- Execution of recipe-controlled programs with preselectable recipes and objects
- Program structuring and operation in accordance with S88
- Profibus DP and Profibus PA coupling of plant peripherals

A comprehensive range of standard modules is available. The modules required in the PLC and their links are generated directly out of Excel, parameterized, stored in the PLC project and immediately transferred to the PLC, if required. Thus, a current parameter and process description is available at any time in Excel table format.

Furthermore, an as-built documentation can always be written from the system back into the GEARBOXX™ tool.



GEARBOXX™

The compact control system for breweries

GEARBOXX™ is a proven compact system. This is also illustrated by the following list of international references:

Almaty	Kazakhstan
Bobrujsk	Belarus
Brazzaville	Republic of the Congo
Brest	Belarus
Hanoi	Vietnam
Jakutsk	Russia
Kazan	Russia
Lubumbashi	Dem. Republic of the Congo
Manchester	Great Britain
Munich	Germany
Nassau	Bahamas
Nosovice	Czech Republic
Novosibirsk	Russia
Poltava	Ukraine
Poznan	Poland
Schinnen	Netherlands
Thai Binh Town	Vietnam
Thessaloniki	Greece
Tomsk	Russia



Process Engineering

GEA Brewery Systems GmbH

Huppmann Tuchenhausen

Locations:

Heinrich-Huppmann-Str. 1, 97318 Kitzingen, Germany
Phone +49 9321 303-0, Fax +49 9321 303-603

Am Industriepark 2-10, 21514 Büchen, Germany
Phone +49 4155 49-0, Fax +49 4155 49-2770

info@gea-brewery.com, www.gea-brewery.com